

COUNTY HALL KINGSTON

A Living Legacy

WHITTLING APARTMENTS



LONDON
SQUARE

Life Among History

Explore a stunning array of refined apartments and duplexes, housed within the elegant heritage building.



Computer Generated Image



Whittling Apartments

Named after the technique behind the intricate floral wood carvings that grace the door arches of several amenity rooms, this section celebrates the traditional craftsmanship of whittling — a fine art that lends warmth and character to the building's historic interiors.



Style and
Comfort



Where
Light Lingers

The Finer Details

General Specifications

- Contemporary ironmongery in a matt bronze finish
- Bespoke wardrobes to principal bedroom with LED strip lighting – dark and light colour palette available
- Wardrobes are available to all other bedrooms as an optional upgrade
- Siemens freestanding washer-dryer provided in utility cupboards where applicable. Some utility rooms feature stackable washing machine and tumble dryer, subject to apartment layout

Security and Peace of Mind

- Hardwired smoke alarms
- Heat detection to the kitchen
- Sprinkler system installed to each apartment
- Video Entry System
- 999-year lease
- 10-year Build Warranty issued on building completion
- 2-year London Square Customer Care Warranty

Heating and Cooling

- Steel column radiators in polished matt lacquered white in living area, kitchen dining and bedrooms.
- Electric underfloor heating to bathrooms and en-suites.
- Mechanical extract ventilation throughout

Lighting and Electrics

- Downlights applied throughout apartment
- Linear LED Strip lighting to living areas where applicable
- Pendant lighting above kitchen - to select apartments only
- LED lighting to underside of wall-mounted kitchen cabinets
- LED lighting to bathroom/ensuite niche storage and illuminated mirror
- Mid-height TV point to living room and principal bedroom
- Provision for high speed fibre broadband
- USB and USB-C socket provision to kitchen, living area and principal bedroom
- Shaver socket to principal en-suite and bathroom

Wall and Floor Finishes

- Engineered Wood Flooring to internal rooms – dark and light colour palette available
- Porcelain tiles to bathrooms and en-suites
- Painted internal walls and woodwork in soft neutral colour
- Ceilings and bathrooms painted in a white finish

The 1893 Club

- 24-hour concierge
- The Balance Studio
- The Sanctum
- The Tasting Room
- The Games Parlour
- The Picture House
- The Study
- Private Courtyards

The detailed design of some amenity spaces within the 1893 Club may be subject to change





Kitchen

- Matt laminate kitchen units
- Composite stone worktop and full height splashback to underside of wall units and behind hob
- Undermounted sink with 3-in-1 boiling water tap in bronze finish
- Dark and light colour palette available to kitchens*

SIEMENS APPLIANCES (OR SIMILAR)

- Induction hob
- Siemens Integrated single oven
- Siemens Integrated microwave
- Siemens Integrated fridge/freezer
- Siemens Integrated dishwasher
- Siemens concealed extractor hood
- Siemens undercounter wine cabinet

Bathrooms

- Half height feature tiling to bathroom around bath, flooring, WC and basin with full height tiling to shower enclosure
- Storage cabinetry above WC
- Backlit illuminated brushed bronze framed mirror above basin
- WC with soft close lid
- Shower over bath benefits from handheld shower head, a high level mounted fixed shower head and glass bath screen in bronze frame
- White acrylic bath with tiled bath panel
- Tiled recess within shower enclosure for bottle storage with LED strip lighting
- Heated wall with towel rails in bronze finish
- Dark and light colour palette available to bathrooms*

WC

- Feature wall tile behind WC with matching behind basin
- Wall mounted basin with bronze finish basin mixer and bottle trap
- Backlit illuminated brushed bronze framed mirror above basin
- Feature lighting
- WC available in select apartments only

En-Suites

- Half height feature tiling to en-suite around bath, flooring, WC and basin with full height tiling to shower enclosure
- Storage cabinetry above WC
- Backlit illuminated brushed bronze framed mirror above basin
- WC with soft close lid
- Shower benefits from handheld shower head, a high level mounted fixed shower head and glass shower screen in bronze
- Feature Niche with shelving and LED lighting
- Towel rails in bronze finish
- Dark and light colour palette available to bathrooms*

*Where applicable, please refer to floorplans or speak to our Sales team



Perfectly
Refined



SIMPLE

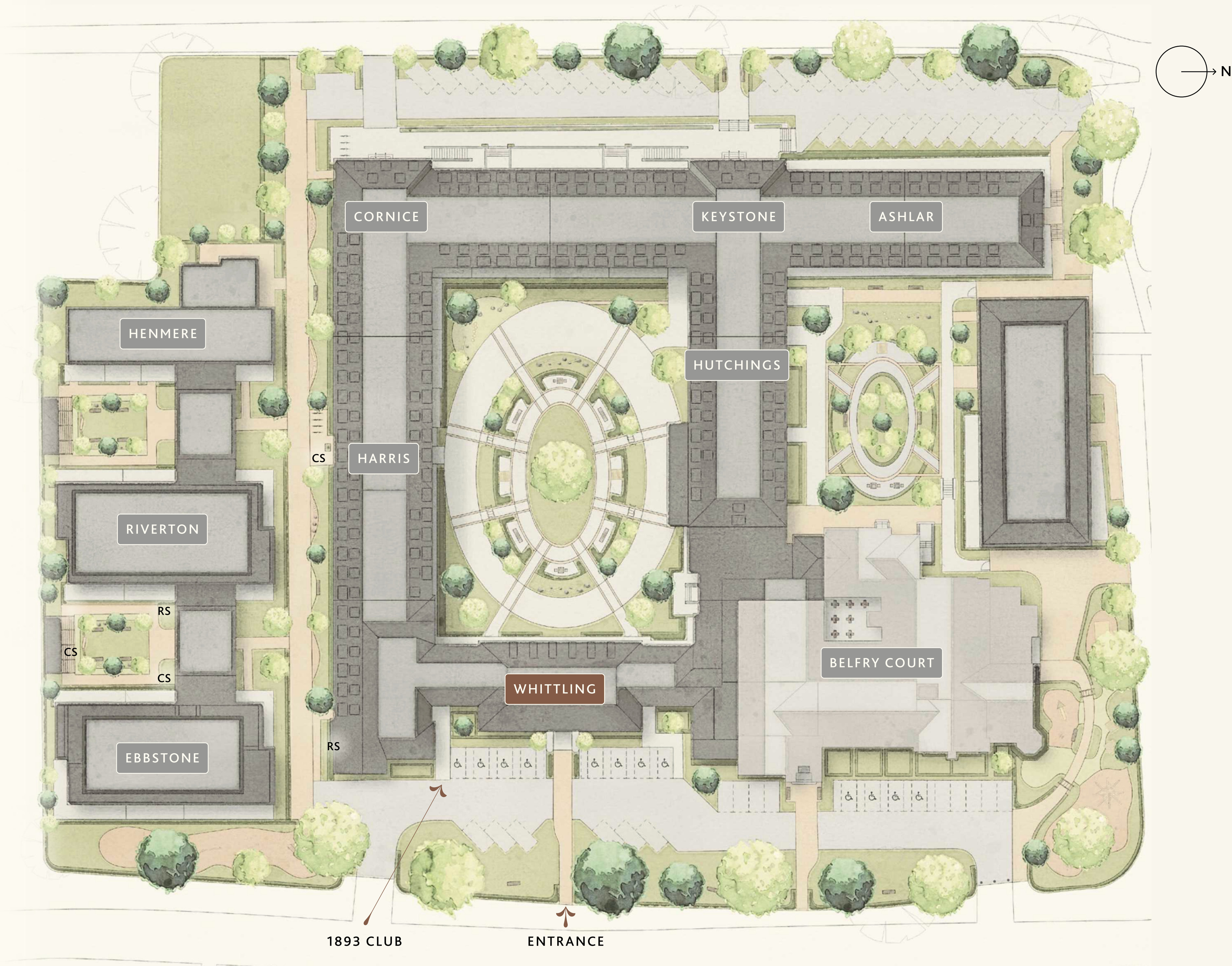


A Renewing
Escape



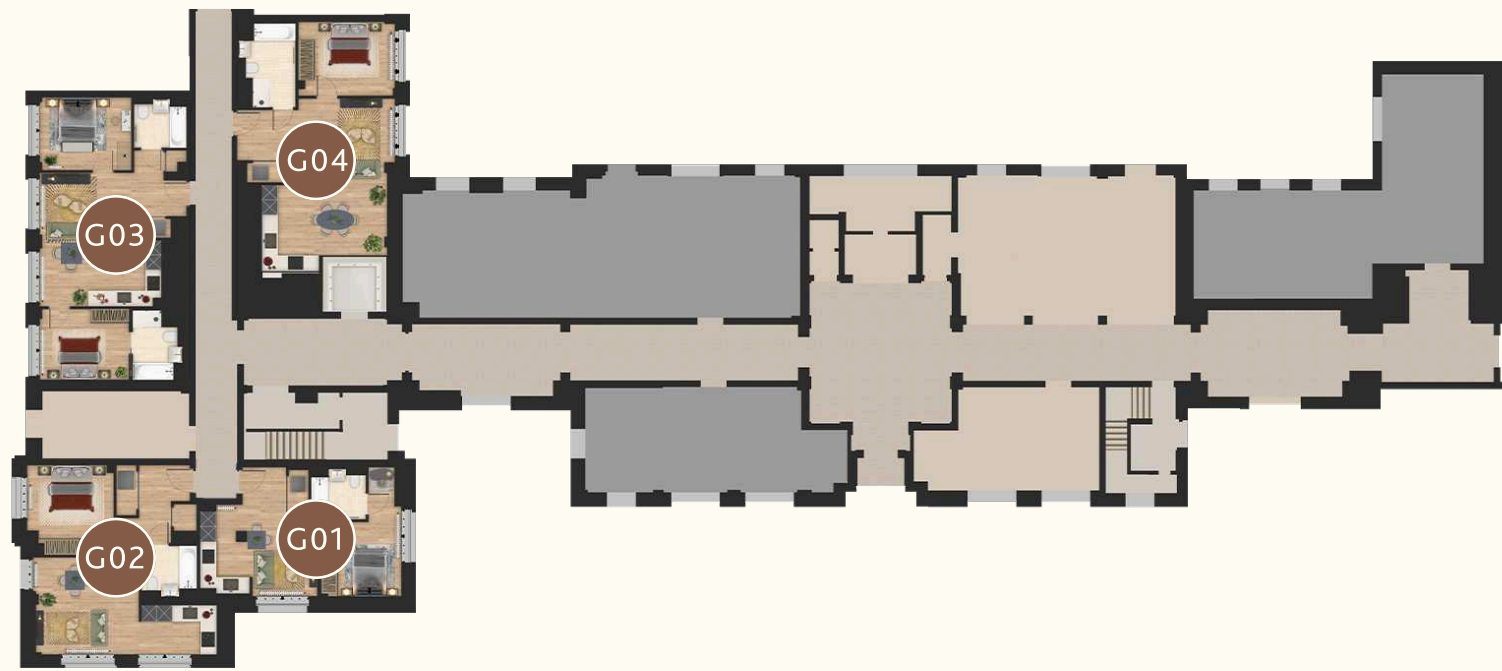
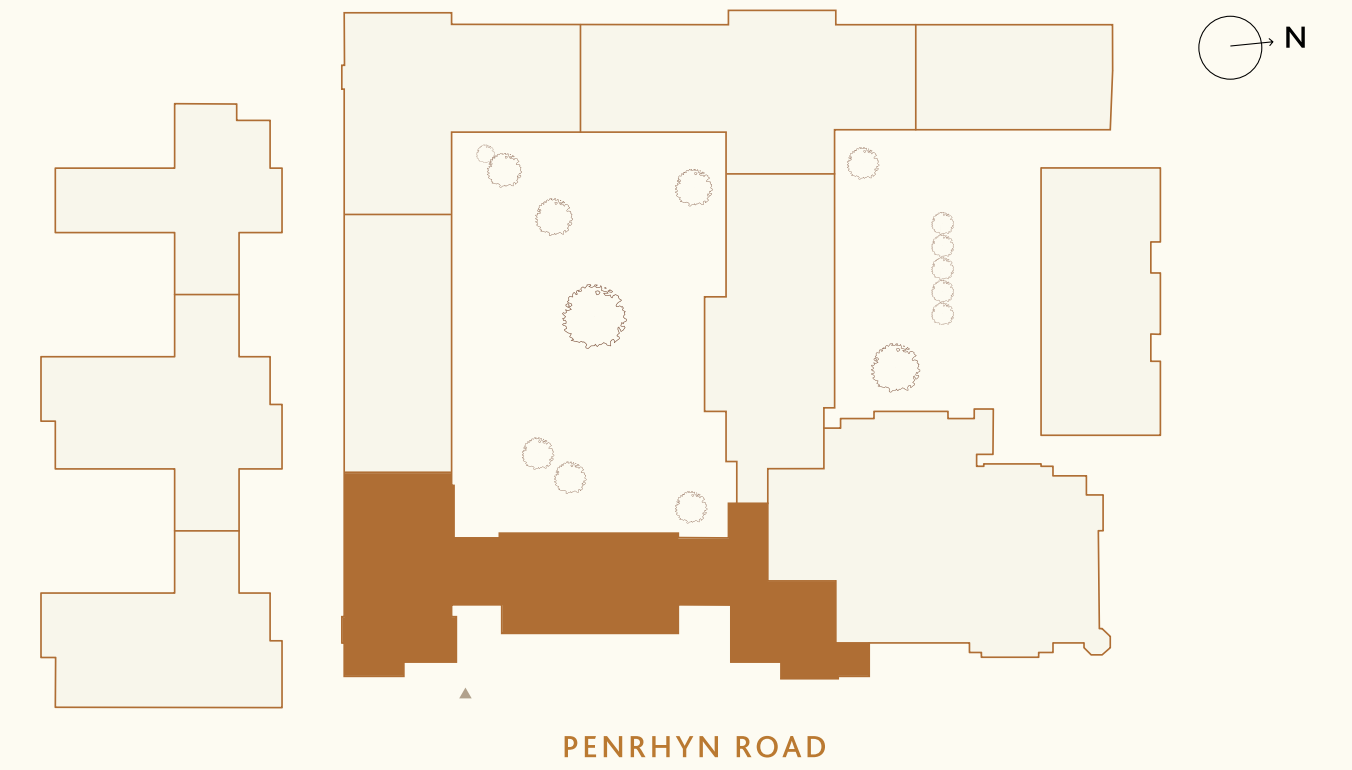
Computer Generated Images

A View From Above



CS - CYCLE STORE
RS - REFUSE STORE

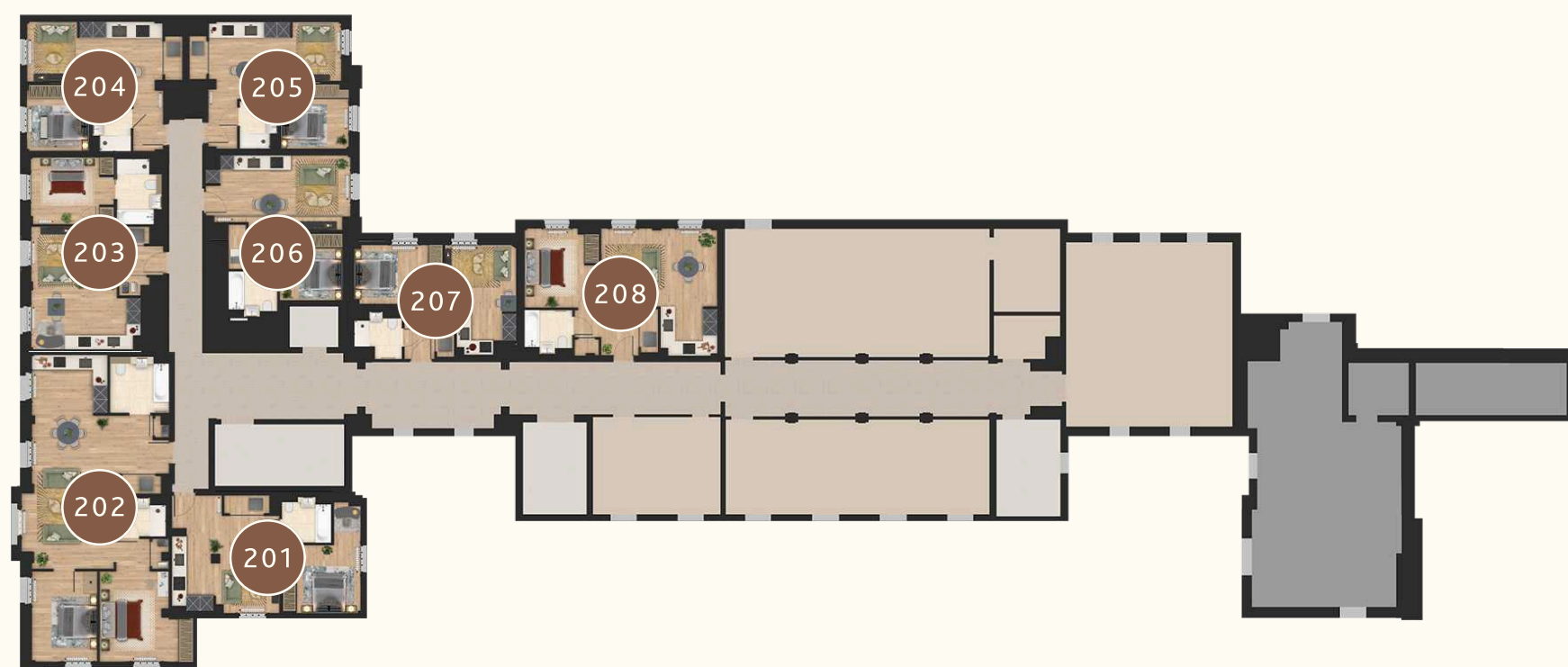
The Choice is Yours



GROUND FLOOR



FIRST FLOOR



SECOND FLOOR



THIRD FLOOR



FOURTH FLOOR

Apartments 104 & 204

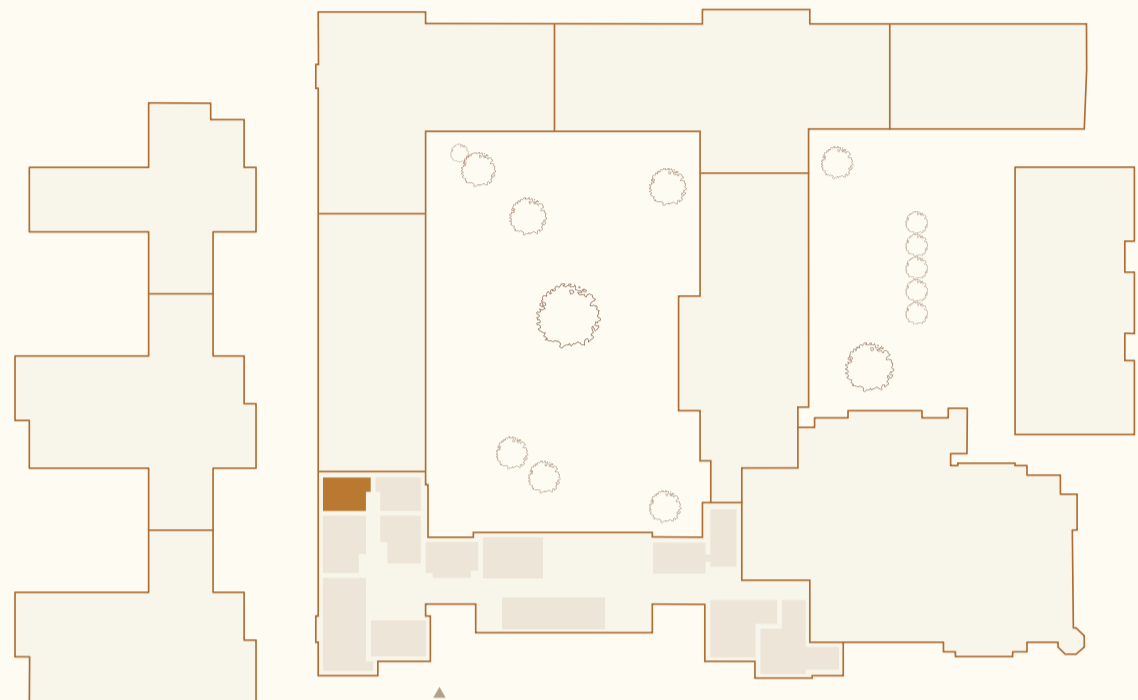
STUDIO | BUILDING WHITTLING APARTMENTS

FIRST FLOOR

APARTMENT 104

SECOND FLOOR

APARTMENT 204



PENRHYN ROAD



ROOM DIMENSIONS

LIVING / KITCHEN / DINING ROOM
6.13M X 3.55M | 20'1" X 11'8"

PRINCIPAL BEDROOM
2.80M X 2.98M | 9'2" X 9'9"

TOTAL INTERNAL AREA
104 - 37 M² | 408 FT²
204 - 37 M² | 407 FT²

KEY

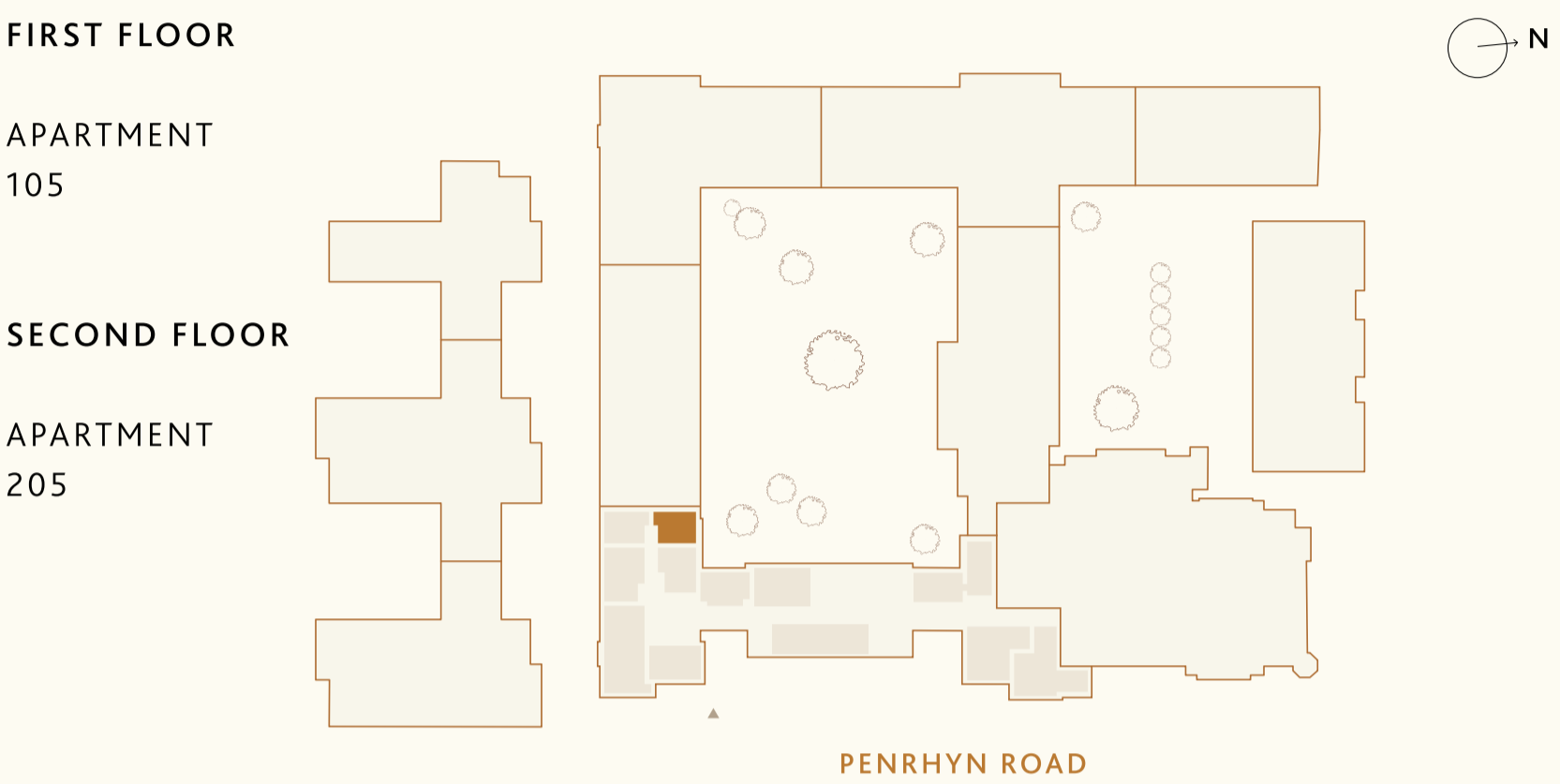
- OPTIONAL WARDROBE 2M -----
- ROOF LIGHT 1.5M



Total floor area may vary slightly to the figure that is listed. Wardrobes are included in the principal bedroom only, all other furniture is indicative and not supplied. Dotted lines indicate areas where ceiling heights may vary.

Apartments 105 & 205

STUDIO | BUILDING WHITTLING APARTMENTS



ROOM DIMENSIONS

LIVING / KITCHEN / DINING ROOM
6.11M X 3.55M | 20'1" X 11'8"

PRINCIPAL BEDROOM
3.13M X 2.97M | 10'3" X 9'9"

TOTAL INTERNAL AREA
38.8 M² | 417.6 FT²

KEY

W:- OPTIONAL WARDROBE 2M -----

RL:- ROOF LIGHT 1.5M

Total floor area may vary slightly to the figure that is listed. Wardrobes are included in the principal bedroom only, all other furniture is indicative and not supplied. Dotted lines indicate areas where ceiling heights may vary.

Apartments 106 & 206

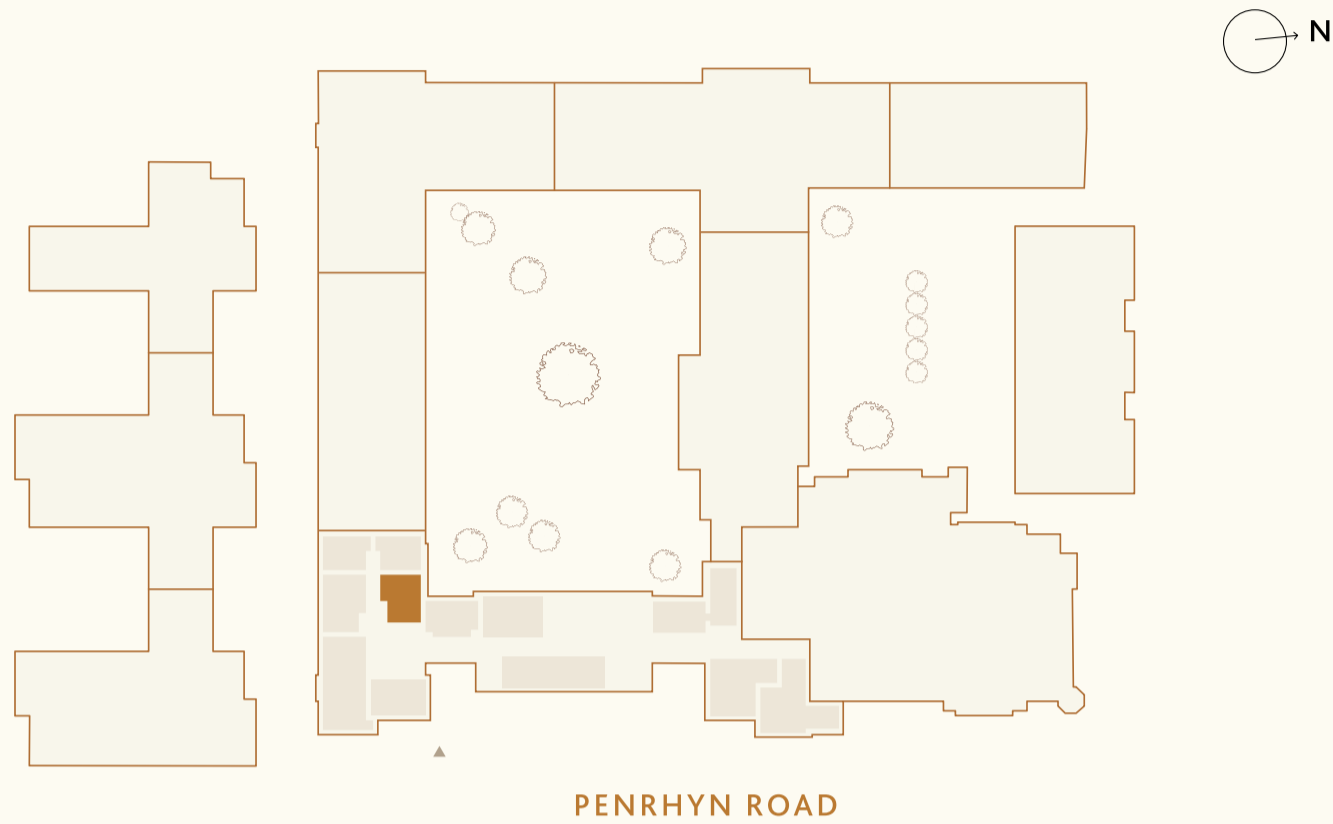
STUDIO | BUILDING WHITTLING APARTMENTS

FIRST FLOOR

APARTMENT 106

SECOND FLOOR

APARTMENT 206

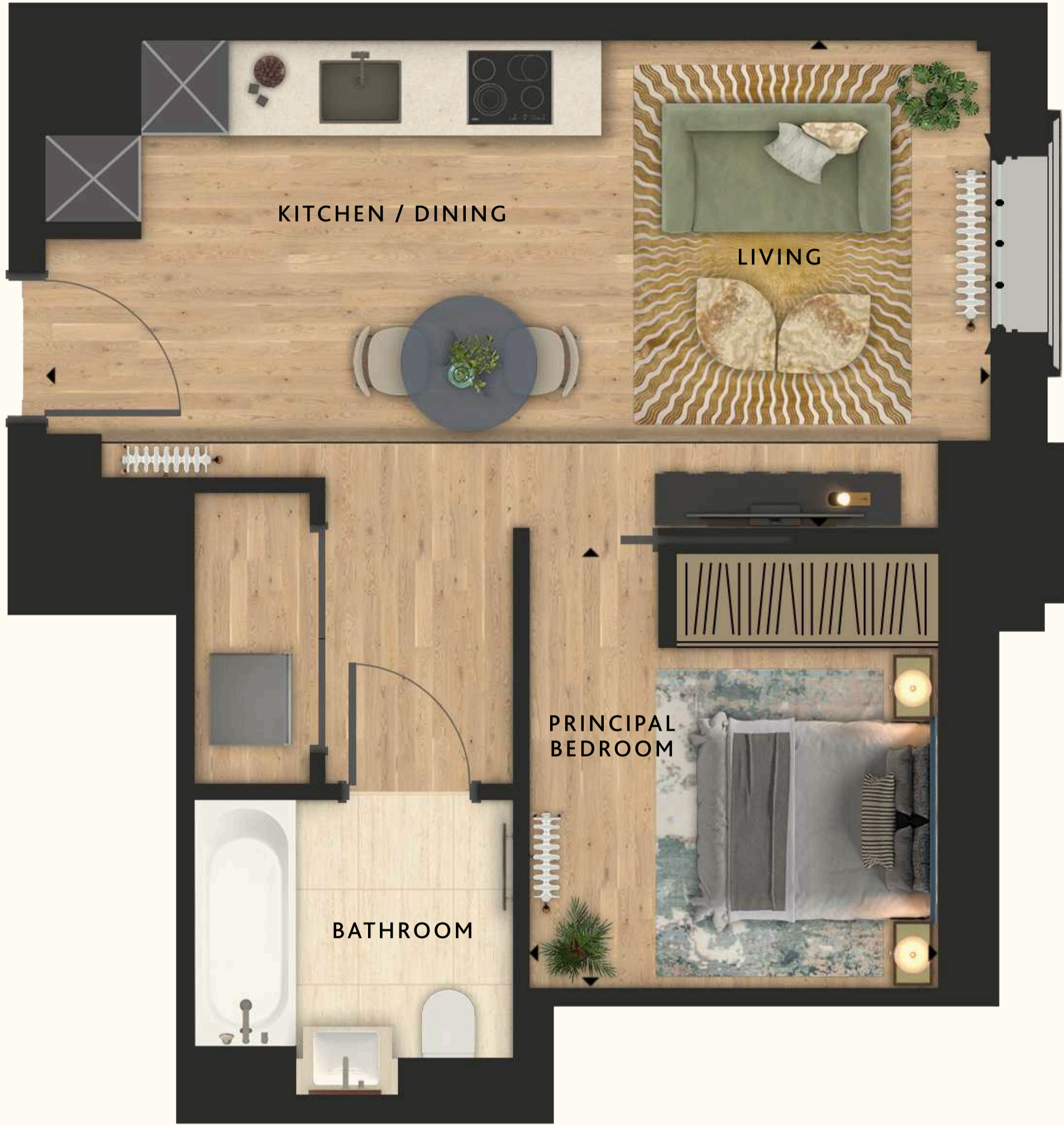


ROOM DIMENSIONS

LIVING / KITCHEN / DINING ROOM
6.48M X 3.23M | 21'3" X 10'7"

BEDROOM
2.81M X 3.00M | 9'3" X 9'10"

TOTAL INTERNAL AREA
40 M² | 429 FT²



KEY
W:- OPTIONAL WARDROBE 2M -----
RL:- ROOF LIGHT 1.5M

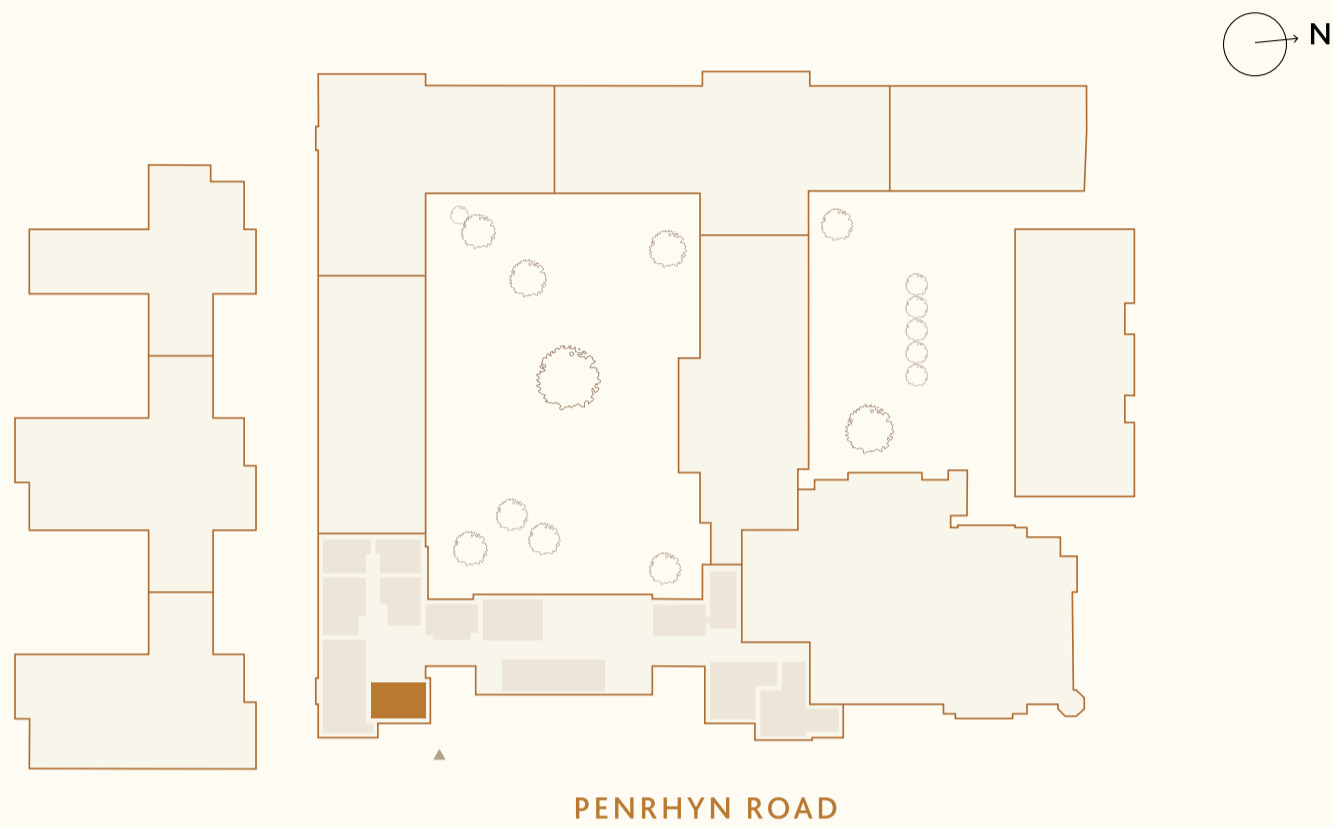
Total floor area may vary slightly to the figure that is listed. Wardrobes are included in the principal bedroom only, all other furniture is indicative and not supplied. Dotted lines indicate areas where ceiling heights may vary.

Apartment G01

STUDIO | BUILDING WHITTLING APARTMENTS

GROUND FLOOR

APARTMENT G01



ROOM DIMENSIONS

LIVING / KITCHEN / DINING ROOM
4.72M X 3.59M | 15'6" X 11'9"

PRINCIPAL BEDROOM
3.22M X 2.99M | 10'7" X 9'10"

TOTAL INTERNAL AREA
39 M² X 419 FT²



- KEY**
- OPTIONAL WARDROBE 2M -----
 - ROOF LIGHT 1.5M

Total floor area may vary slightly to the figure that is listed. Wardrobes are included in the principal bedroom only, all other furniture is indicative and not supplied. Dotted lines indicate areas where ceiling heights may vary.

Apartments 101 & 201

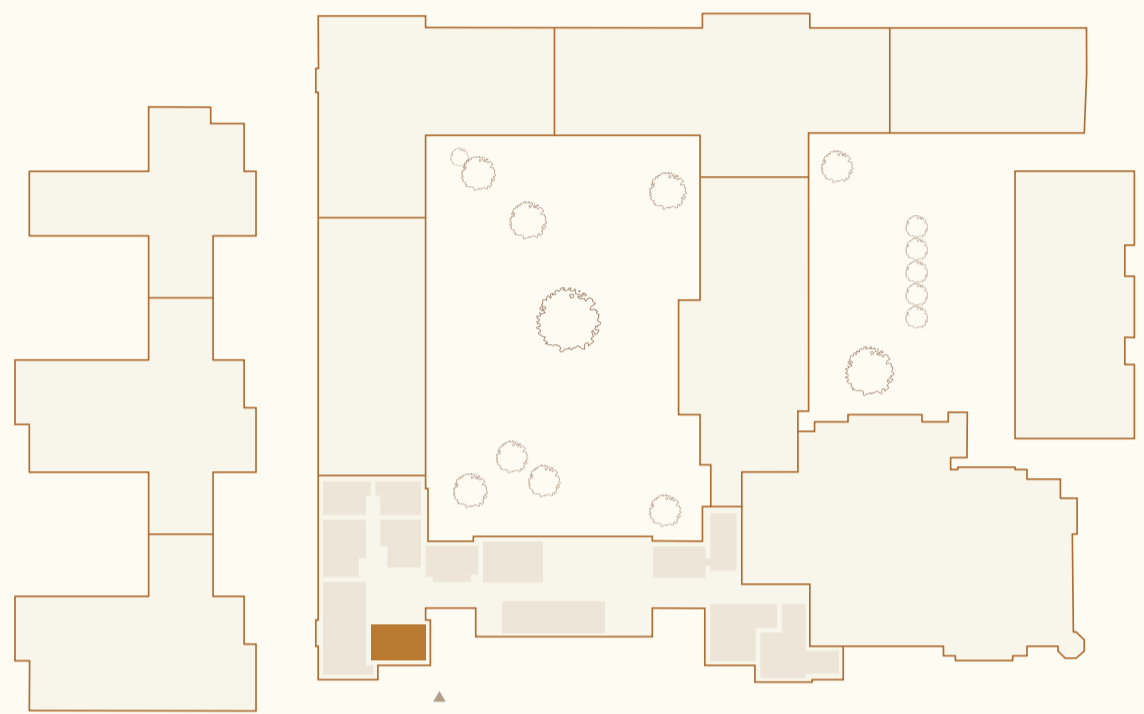
STUDIO | BUILDING WHITTLING APARTMENTS

FIRST FLOOR

APARTMENT 101

SECOND FLOOR

APARTMENT 201



PENRHYN ROAD

ROOM DIMENSIONS

LIVING / KITCHEN / DINING ROOM
4.78M X 3.43M | 15'8" X 11'3"

PRINCIPAL BEDROOM
3.45M X 3.03M | 11'4" X 9'11"

TOTAL INTERNAL AREA
101 - 43 M² | 466 FT²
201 - 43 M² | 463 FT²

KEY

- W**:- OPTIONAL WARDROBE 2M -----
- RL**:- ROOF LIGHT 1.5M

Total floor area may vary slightly to the figure that is listed. Wardrobes are included in the principal bedroom only, all other furniture is indicative and not supplied. Dotted lines indicate areas where ceiling heights may vary.

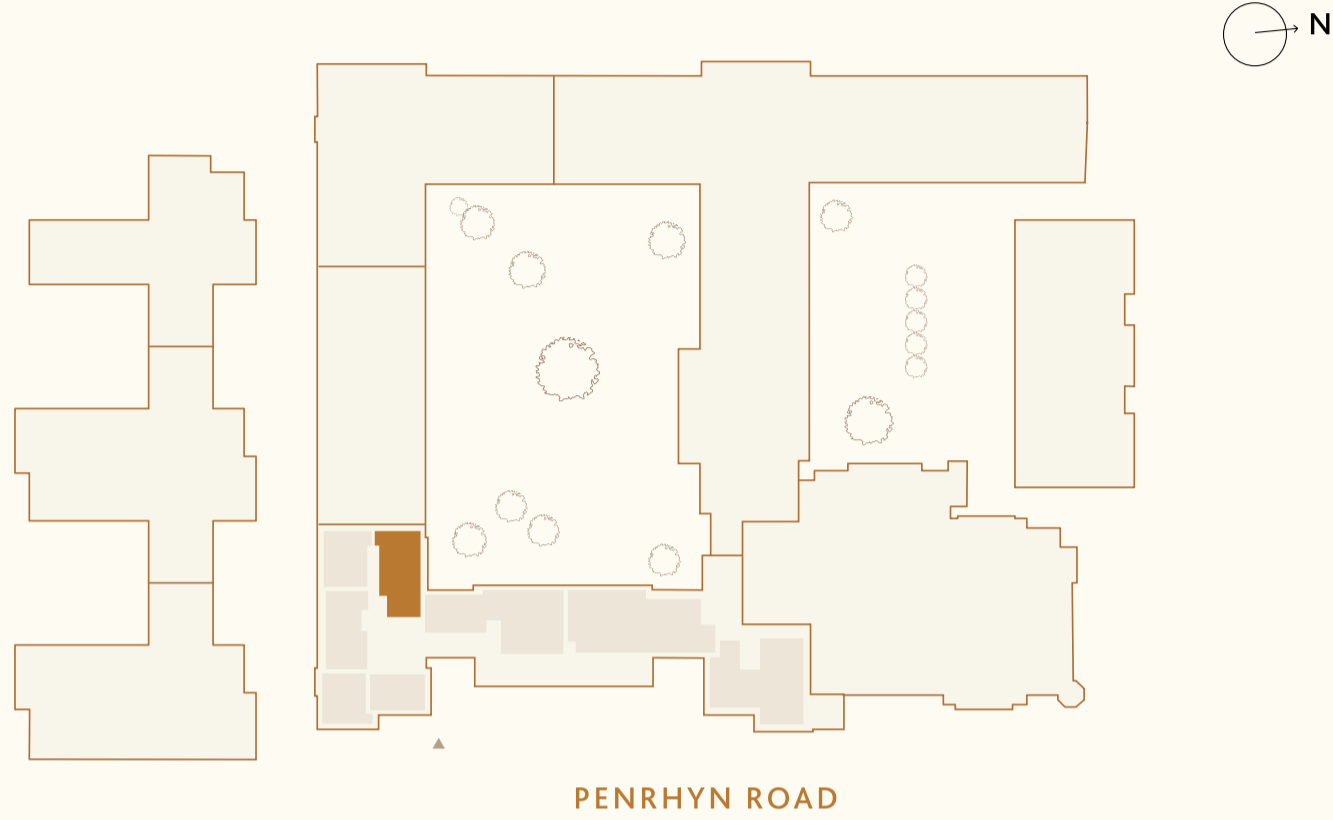


Apartment 304

STUDIO | BUILDING WHITTLING APARTMENTS

THIRD FLOOR

APARTMENT 304



ROOM DIMENSIONS

LIVING / KITCHEN / DINING ROOM
6.48M X 9.00M | 21'3" X 29'6"

PRINCIPAL BEDROOM
3.31M X 3.45M | 10'10" X 11'4"

TOTAL INTERNAL AREA
76 M² | 822 FT²

- KEY**
- OPTIONAL WARDROBE 2M -----
 - ROOF LIGHT 1.5M

Total floor area may vary slightly to the figure that is listed. Wardrobes are included in the principal bedroom only, all other furniture is indicative and not supplied. Dotted lines indicate areas where ceiling heights may vary.



Apartments 107 & 207

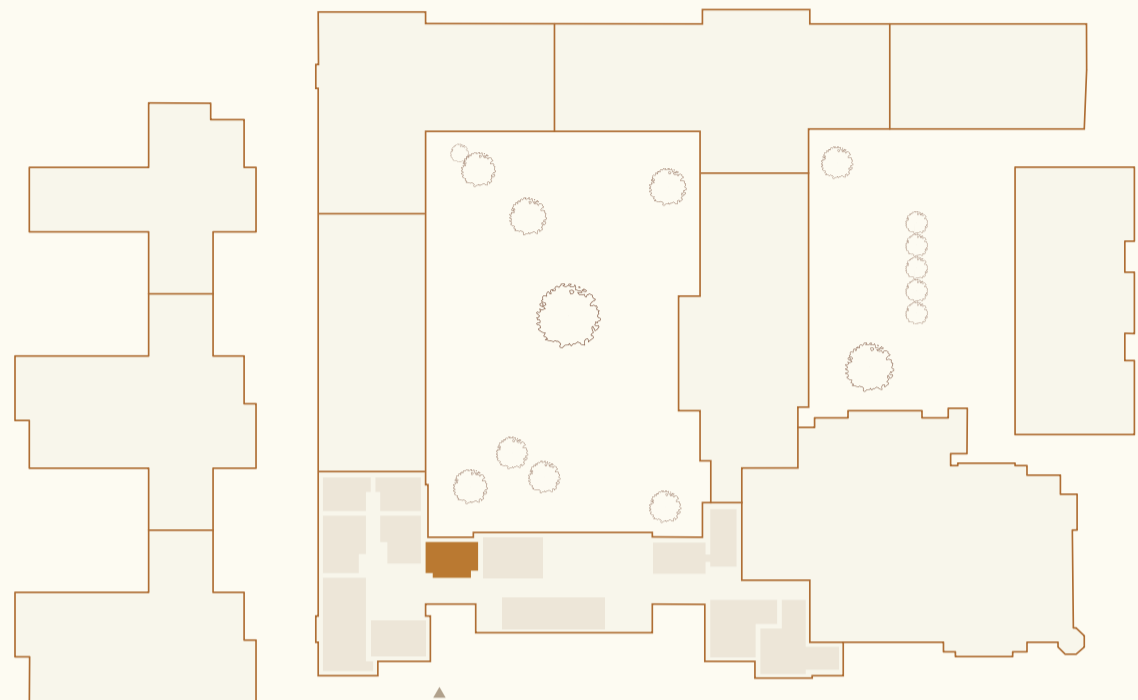
STUDIO | BUILDING WHITTLING APARTMENTS

FIRST FLOOR

APARTMENT 107

SECOND FLOOR

APARTMENT 207



PENRHYN ROAD

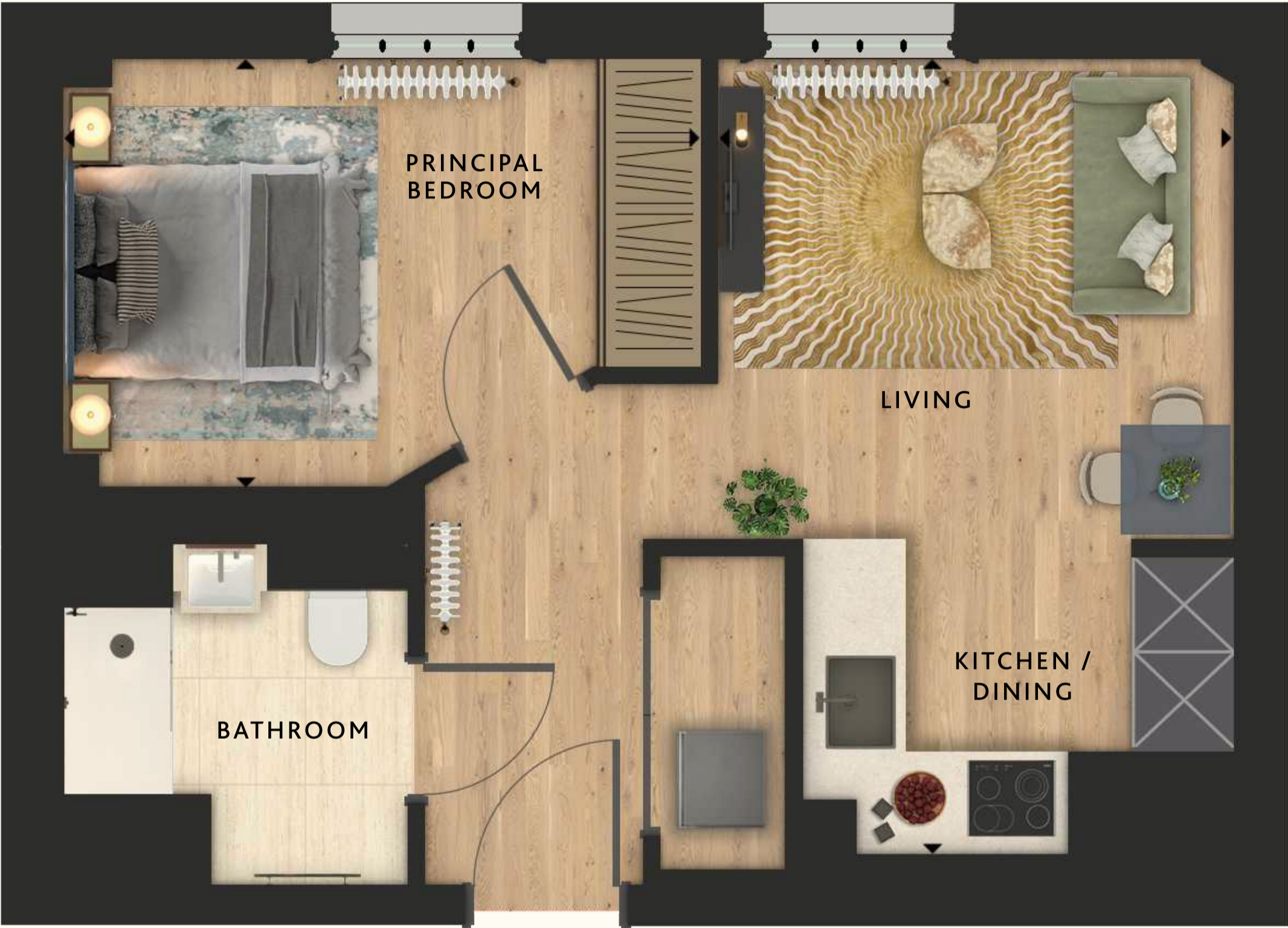


ROOM DIMENSIONS

LIVING / KITCHEN / DINING ROOM
3.29M X 5.07M | 10'10" X 16'8"

PRINCIPAL BEDROOM
4.07M X 2.73M | 13'4" X 9'0"

TOTAL INTERNAL AREA
107 - 37 M² | 402 FT²
207 - 38 M² | 404 FT²



- KEY**
- OPTIONAL WARDROBE 2M -----
 - ROOF LIGHT 1.5M

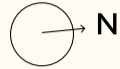
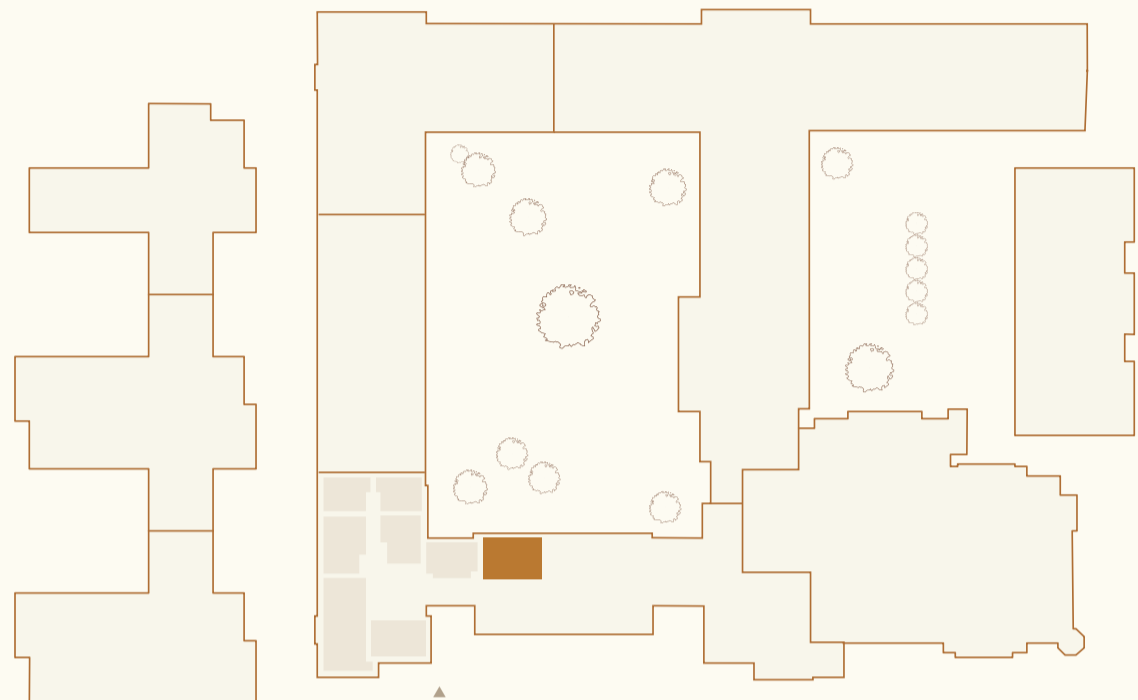
Total floor area may vary slightly to the figure that is listed. Wardrobes are included in the principal bedroom only, all other furniture is indicative and not supplied. Dotted lines indicate areas where ceiling heights may vary.

Apartment 208

1 BEDROOM | BUILDING WHITTLING APARTMENTS

SECOND FLOOR

APARTMENT 208



ROOM DIMENSIONS

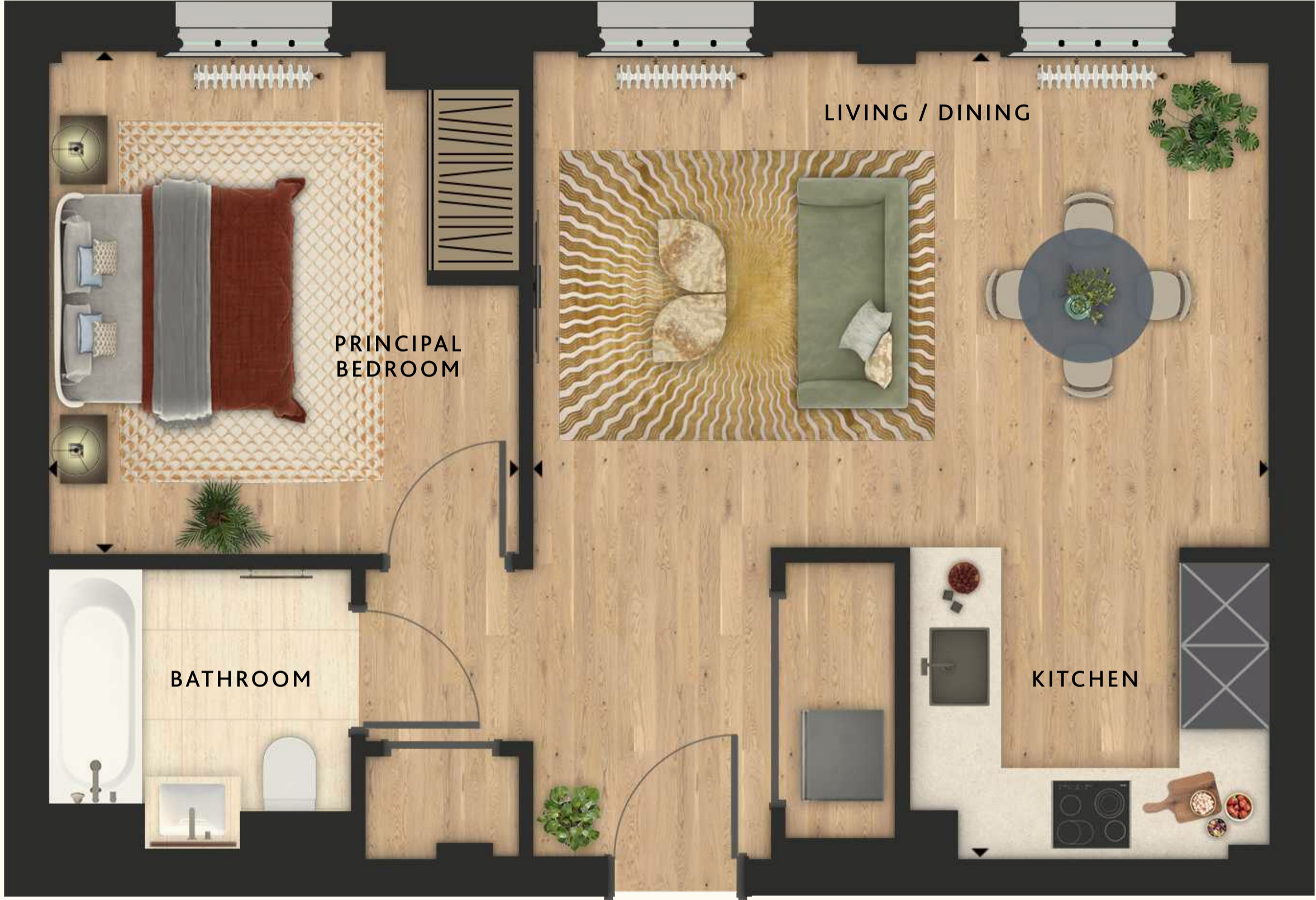
LIVING / KITCHEN / DINING ROOM
5.32M X 5.84M | 17'6" X 19'2"

PRINCIPAL BEDROOM
3.41M X 3.64M | 11'2" X 11'11"

TOTAL INTERNAL AREA
51 M² | 552 FT²

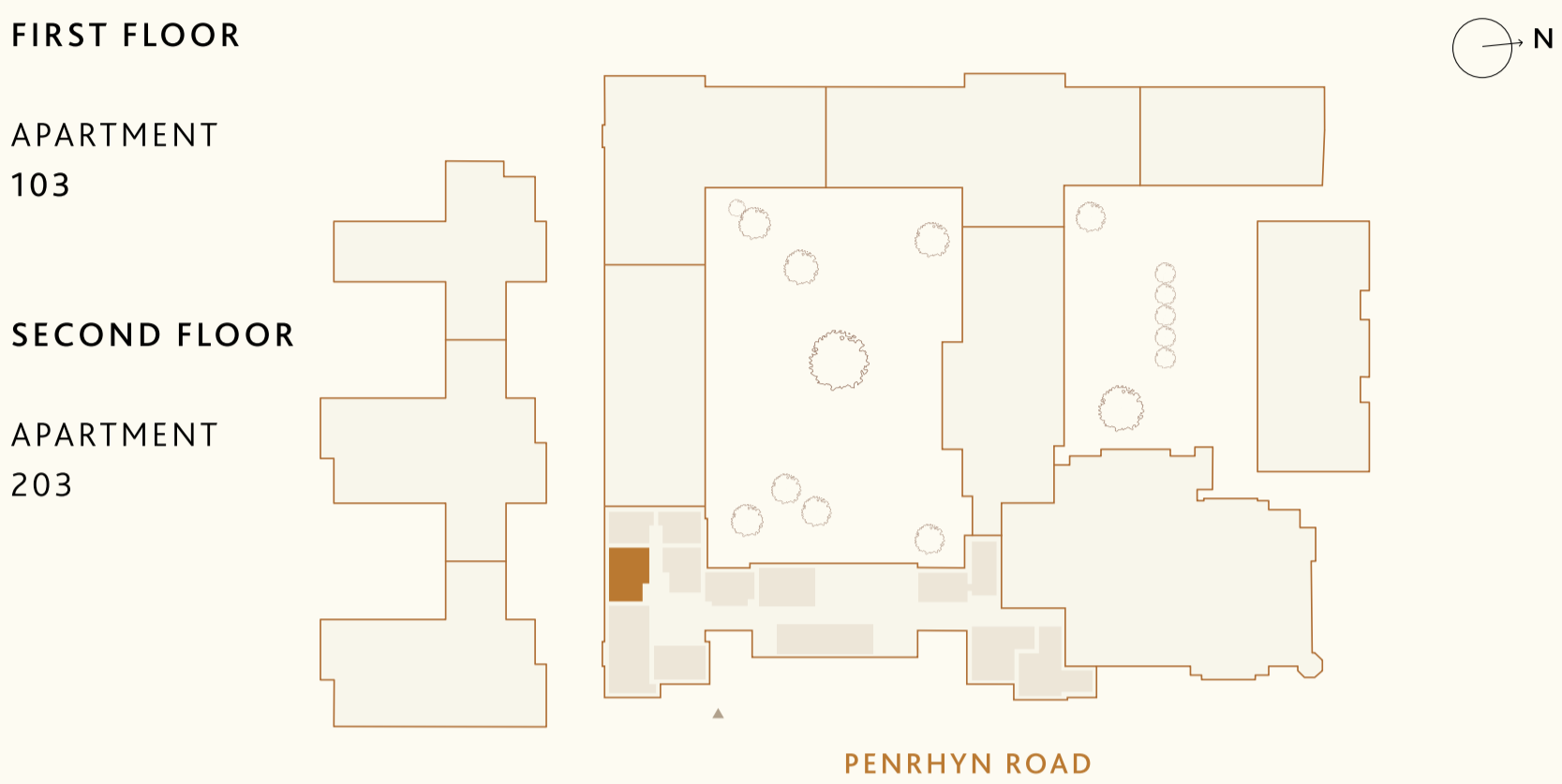
- KEY**
- OPTIONAL WARDROBE 2M -----
 - ROOF LIGHT 1.5M

Total floor area may vary slightly to the figure that is listed. Wardrobes are included in the principal bedroom only, all other furniture is indicative and not supplied. Dotted lines indicate areas where ceiling heights may vary.



Apartments 103 & 203

1 BEDROOM | BUILDING WHITTLING APARTMENTS



ROOM DIMENSIONS

LIVING / KITCHEN / DINING ROOM	TOTAL INTERNAL AREA
5.08M X 5.70M 16'8" X 18'8"	103 - 51 M ² 551 FT ²
PRINCIPAL BEDROOM	203 - 51 M ² 550 FT ²
3.85M X 3.10M 12'8" X 10'2"	

- KEY**
- OPTIONAL WARDROBE 2M -----
 - ROOF LIGHT 1.5M

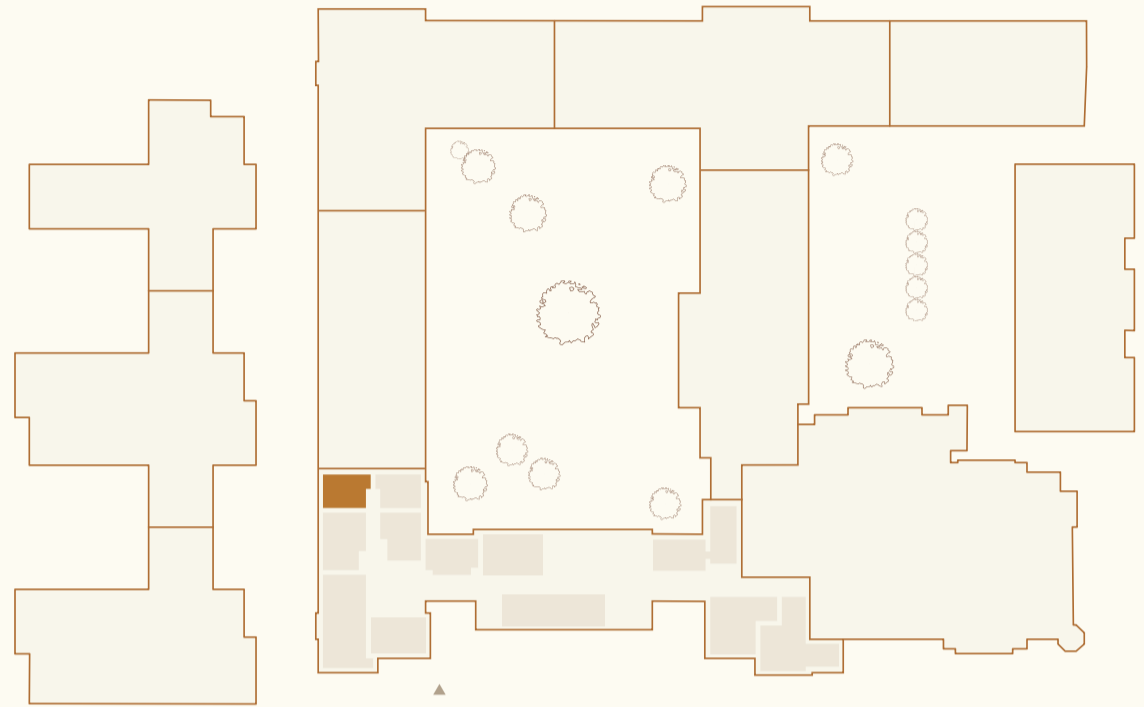
Total floor area may vary slightly to the figure that is listed. Wardrobes are included in the principal bedroom only, all other furniture is indicative and not supplied. Dotted lines indicate areas where ceiling heights may vary.

Apartment 303

1 BEDROOM | BUILDING WHITTLING APARTMENTS

THIRD FLOOR

APARTMENT 303



PENRHYN ROAD

ROOM DIMENSIONS

LIVING / KITCHEN / DINING ROOM
5.81M X 5.39M | 19'1" X 17'8"

PRINCIPAL BEDROOM
3.49M X 3.41M | 11'5" X 11'2"

TOTAL INTERNAL AREA
54 M² | 586 FT²

- KEY**
- OPTIONAL WARDROBE 2M -----
 - ROOF LIGHT 1.5M

Total floor area may vary slightly to the figure that is listed. Wardrobes are included in the principal bedroom only, all other furniture is indicative and not supplied. Dotted lines indicate areas where ceiling heights may vary.

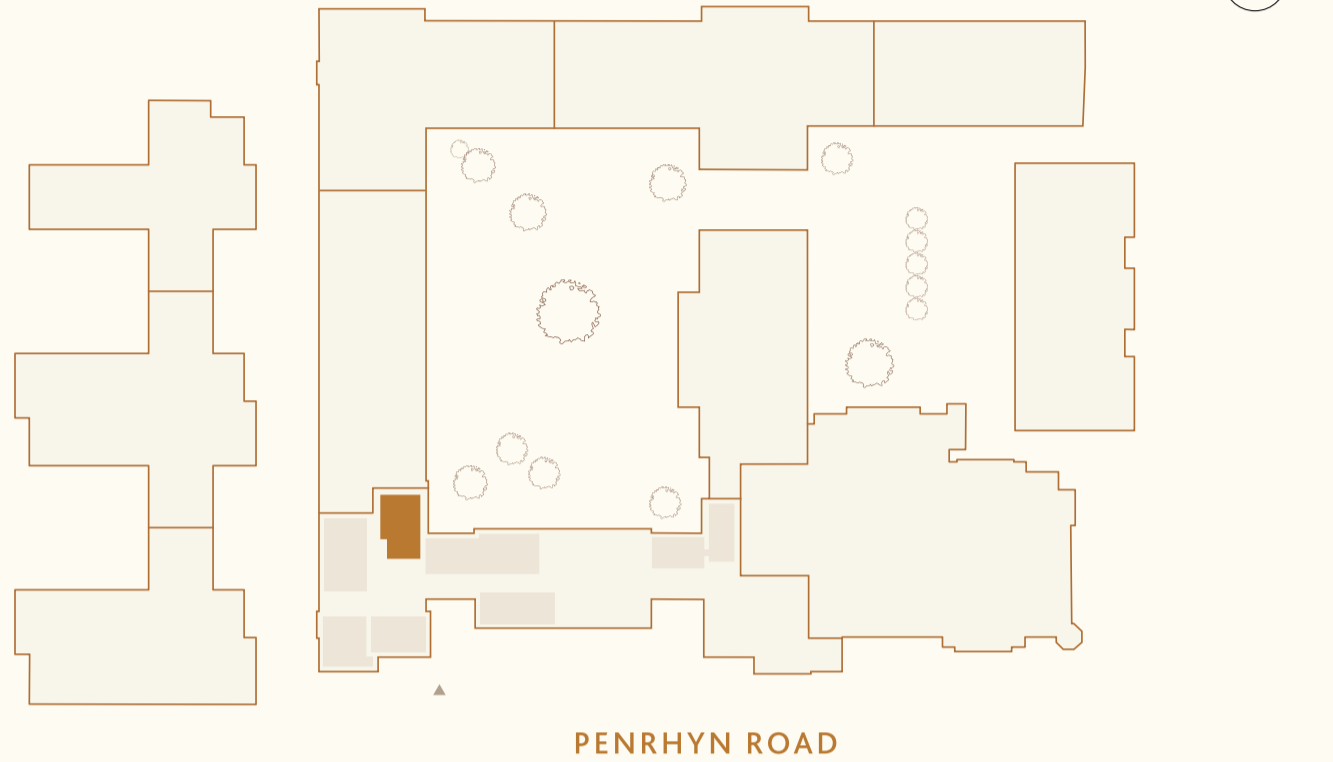


Apartment G04

1 BEDROOM | BUILDING WHITTLING APARTMENTS

GROUND FLOOR

APARTMENT G04



ROOM DIMENSIONS

LIVING / KITCHEN / DINING ROOM
5.13M X 7.07M | 16'10" X 23'2"

PRINCIPAL BEDROOM
3.96M X 3.03M | 13'0" X 9'11"

TOTAL INTERNAL AREA
59 M² | 637 FT²

- KEY**
- OPTIONAL WARDROBE 2M -----
 - ROOF LIGHT 1.5M

Total floor area may vary slightly to the figure that is listed. Wardrobes are included in the principal bedroom only, all other furniture is indicative and not supplied. Dotted lines indicate areas where ceiling heights may vary.

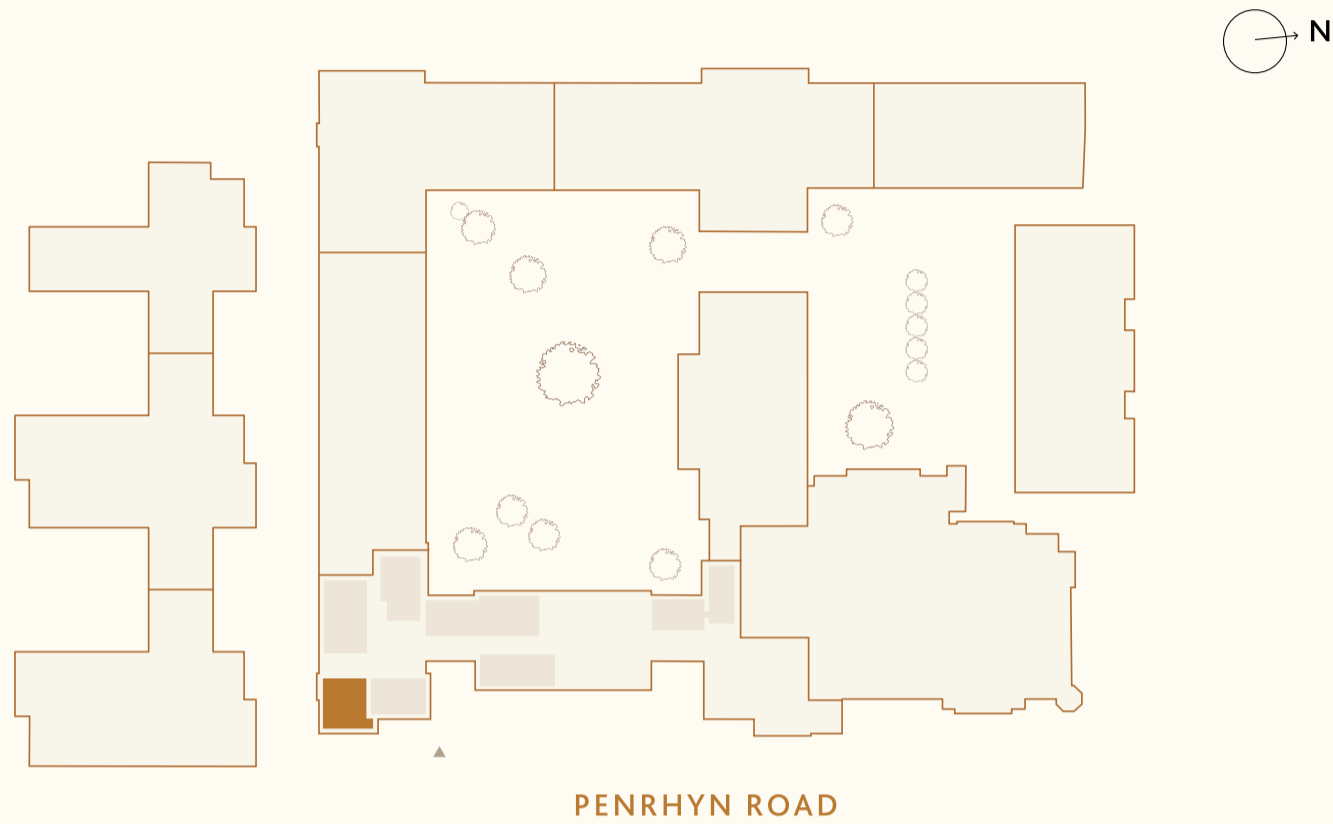


Apartment G02

1 BEDROOM | BUILDING WHITTLING APARTMENTS

GROUND FLOOR

APARTMENT G02



ROOM DIMENSIONS

LIVING / KITCHEN / DINING ROOM
7.19M X 3.86M | 23'7" X 12'8"

PRINCIPAL BEDROOM
3.45M X 3.57M | 11'4" X 11'8"

TOTAL INTERNAL AREA
50 M² | 540 FT²



- KEY**
- OPTIONAL WARDROBE 2M -----
 - ROOF LIGHT 1.5M

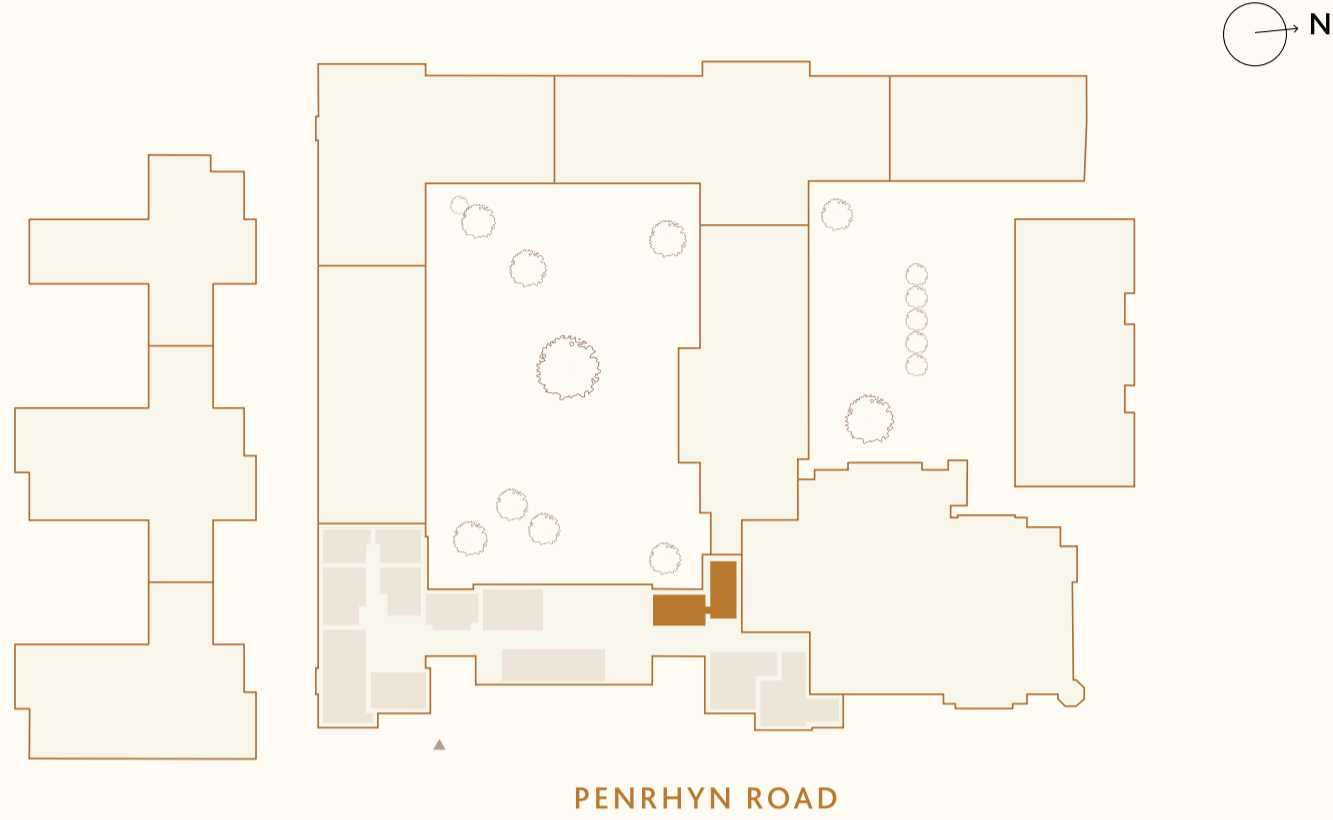
Total floor area may vary slightly to the figure that is listed. Wardrobes are included in the principal bedroom only, all other furniture is indicative and not supplied. Dotted lines indicate areas where ceiling heights may vary.

Apartment 108

1 BEDROOM | BUILDING WHITTLING APARTMENTS

FIRST FLOOR

APARTMENT 108



ROOM DIMENSIONS

LIVING / KITCHEN / DINING ROOM
7.56M X 4.44M | 24'10" X 14'7"

PRINCIPAL BEDROOM
4.20M X 3.87M | 13'10" X 12'9"

TOTAL INTERNAL AREA
69 M² | 742 FT²



- KEY**
- W**:- OPTIONAL WARDROBE 2M -----
 - RL**:- ROOF LIGHT 1.5M

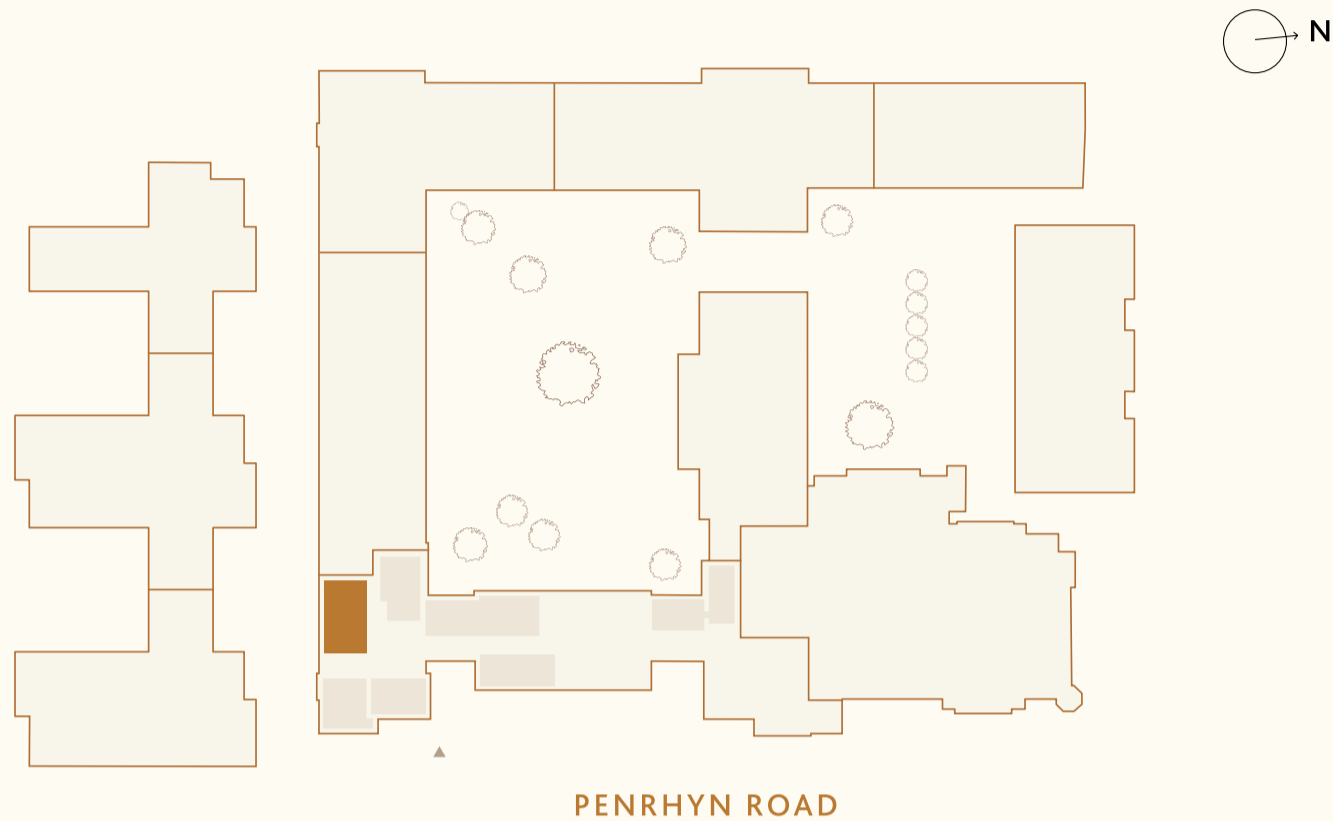
Total floor area may vary slightly to the figure that is listed. Wardrobes are included in the principal bedroom only, all other furniture is indicative and not supplied. Dotted lines indicate areas where ceiling heights may vary.

Apartment G03

2 BEDROOM | BUILDING WHITTLING APARTMENTS

GROUND FLOOR

APARTMENT G03



ROOM DIMENSIONS

LIVING / KITCHEN / DINING ROOM
3.37M X 5.57M | 11'1" X 18'3"

PRINCIPAL BEDROOM
3.83M X 3.04M | 12'7" X 10'0"

BEDROOM 2
3.73M X 2.96M | 12'3" X 9'8"

TOTAL INTERNAL AREA
68 M² | 734 FT²

- KEY**
- W**:- OPTIONAL WARDROBE 2M -----
 - RL**:- ROOF LIGHT 1.5M



Total floor area may vary slightly to the figure that is listed. Wardrobes are included in the principal bedroom only, all other furniture is indicative and not supplied. Dotted lines indicate areas where ceiling heights may vary.

Apartments 102 & 202

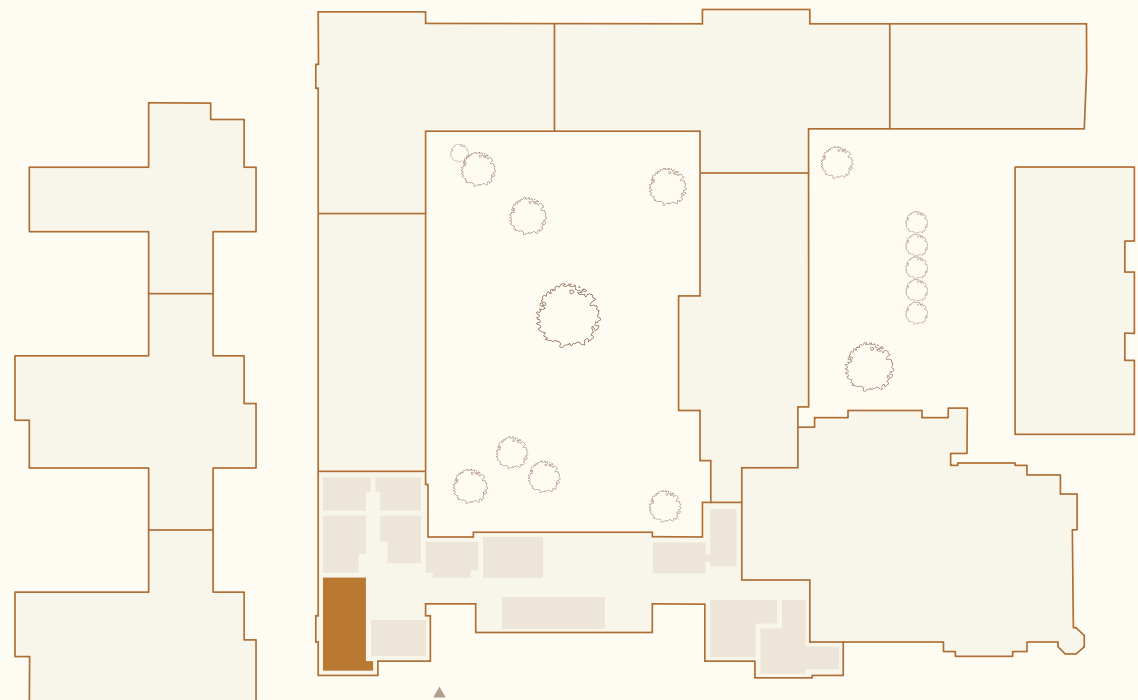
2 BEDROOM | BUILDING WHITTLING APARTMENTS

FIRST FLOOR

APARTMENT 102

SECOND FLOOR

APARTMENT 202



PENRHYN ROAD

ROOM DIMENSIONS

LIVING / KITCHEN / DINING ROOM
3.67M X 9.55M | 12'0" X 31'4"

PRINCIPAL BEDROOM
4.18M X 5.50M | 13'9" X 18'0"

BEDROOM 2
2.92M X 4.05M | 9'7" X 13'3"

TOTAL INTERNAL AREA
102 - 87 M² | 933 FT²
202 - 86 M² | 929 FT²

KEY

- OPTIONAL WARDROBE 2M -----
- ROOF LIGHT 1.5M

Total floor area may vary slightly to the figure that is listed. Wardrobes are included in the principal bedroom only, all other furniture is indicative and not supplied. Dotted lines indicate areas where ceiling heights may vary.

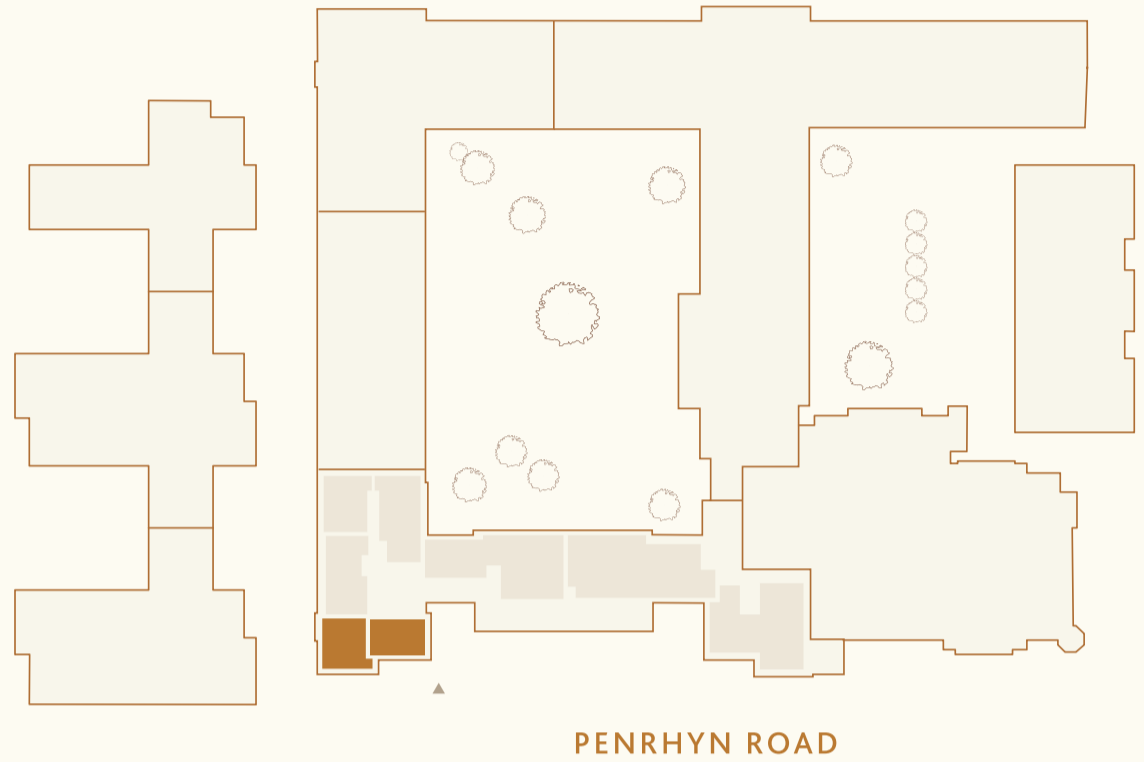


Apartment 301

2 BEDROOM | BUILDING WHITTLING APARTMENTS

THIRD FLOOR

APARTMENT 301



ROOM DIMENSIONS

LIVING / KITCHEN / DINING ROOM
6.37M X 4.75M | 20'11" X 15'7"

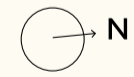
PRINCIPAL BEDROOM
3.93M X 4.77M | 12'11" X 15'8"

BEDROOM 2
4.19M X 2.74M | 13'9" X 9'0"

TOTAL INTERNAL AREA
86.2 M² | 927.8 FT²

- KEY**
- OPTIONAL WARDROBE 2M -----
 - ROOF LIGHT 1.5M

Total floor area may vary slightly to the figure that is listed. Wardrobes are included in the principal bedroom only, all other furniture is indicative and not supplied. Dotted lines indicate areas where ceiling heights may vary.



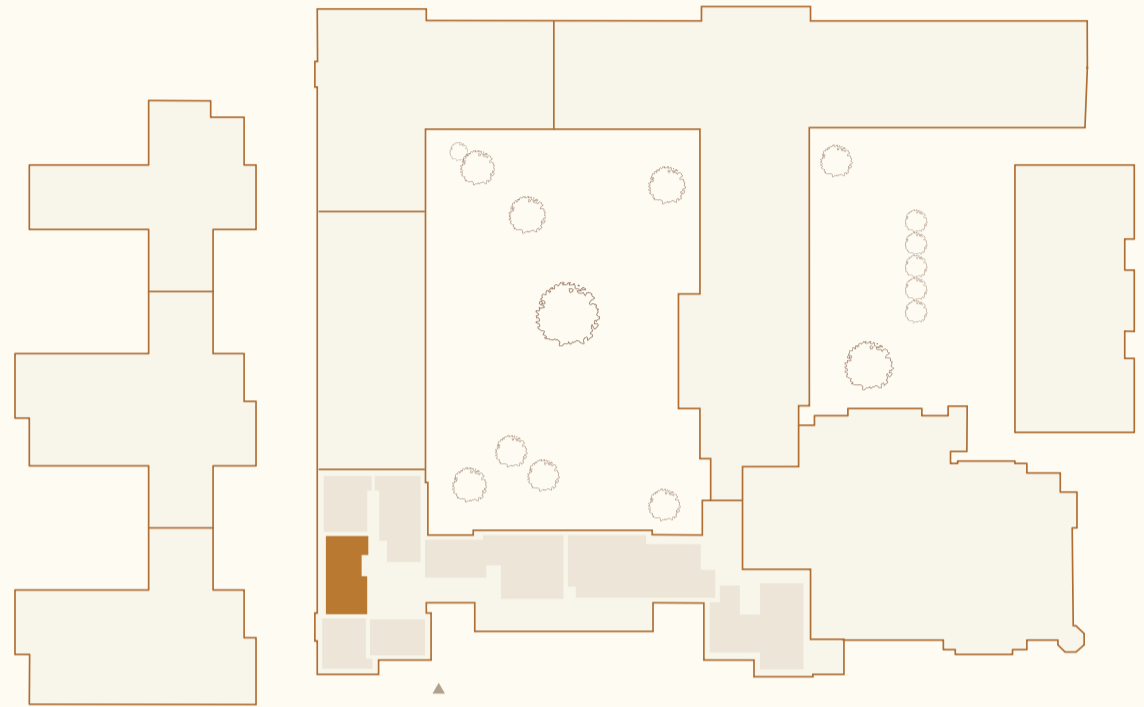
Apartment 302

3 BEDROOM DUPLEX

BUILDING WHITTLING APARTMENTS

THIRD FLOOR

APARTMENT 302



PENRHYN ROAD



ROOM DIMENSIONS

LIVING / KITCHEN / DINING ROOM
9.31M X 8.23M | 30'6" X 27'0"

PRINCIPAL BEDROOM
3.61M X 3.84M | 11'10" X 12'7"

BEDROOM 2
2.89M X 5.78M | 9'6" X 19'0"

BEDROOM 3
2.28M X 5.86M | 7'6" X 19'3"

TOTAL INTERNAL AREA
172 M² | 1852 FT²



FOURTH FLOOR

WC

BEDROOM 3

KEY

- OPTIONAL WARDROBE 2M -----
- ROOF LIGHT 1.5M



THIRD FLOOR

BATHROOM

BEDROOM 2

PRINCIPAL BEDROOM

EN-SUITE



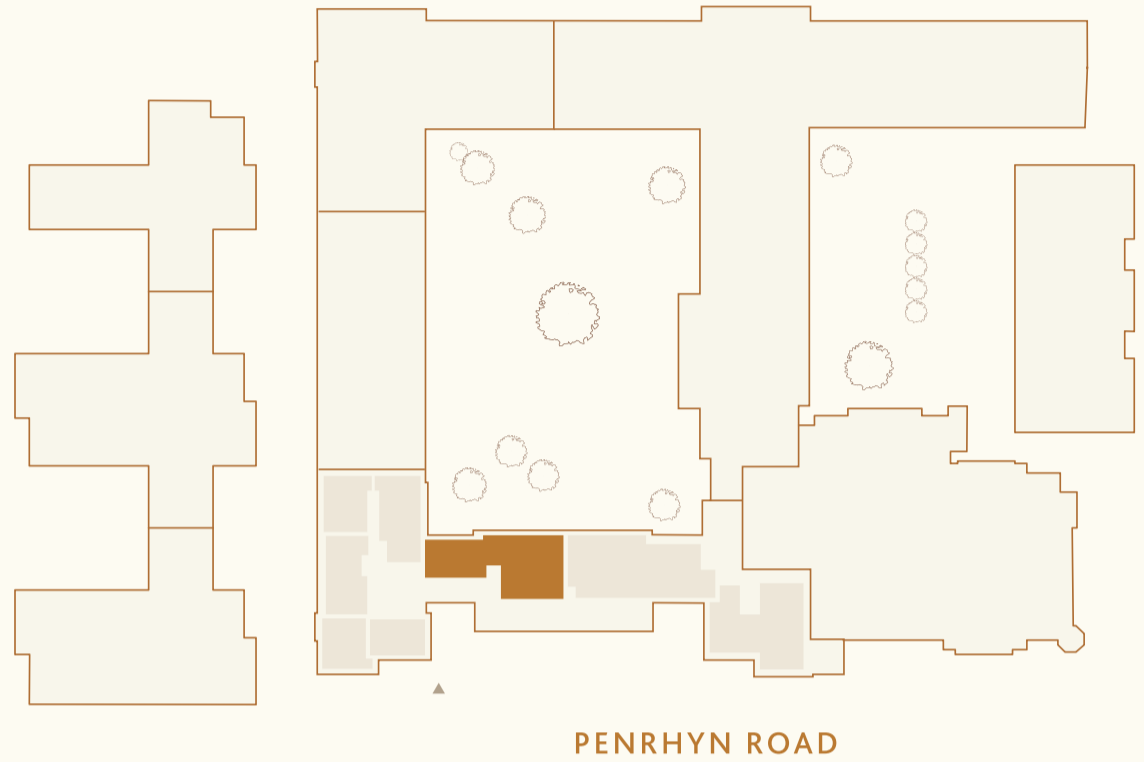
Total floor area may vary slightly to the figure that is listed. Wardrobes are included in the principal bedroom only, all other furniture is indicative and not supplied. Dotted lines indicate areas where ceiling heights may vary.

Apartment 305

3 BEDROOM | BUILDING WHITTLING APARTMENTS

THIRD FLOOR

APARTMENT 305



ROOM DIMENSIONS

LIVING / KITCHEN / DINING ROOM 5.81M X 7.86M 19'1" X 25'10"	BEDROOM 3 2.80M X 5.21M 9'2" X 17'1"
PRINCIPAL BEDROOM 3.14M X 5.56M 10'4" X 18'3"	TOTAL INTERNAL AREA 119 M ² 1287 FT ²
BEDROOM 2 4.60M X 3.28M 15'1" X 10'9"	



KEY
W:- OPTIONAL WARDROBE 2M -----
RL:- ROOF LIGHT 1.5M

Total floor area may vary slightly to the figure that is listed. Wardrobes are included in the principal bedroom only, all other furniture is indicative and not supplied. Dotted lines indicate areas where ceiling heights may vary.



DISCLAIMER: This document is intended to provide an indication of the general style of our development and apartment types. Computer generated images are indicative only and do not accurately depict individual plots. London Square operates a policy of continuous development and individual features such as windows and elevational treatments may vary from time to time. To this end, any drawings, photographs or illustrations shown are non-contractual. All room dimensions shown are accurate to within +/- 50mm, they are not intended to be used for carpet sizes, appliances, spaces or items of furniture. All furniture is indicative and not supplied. Whilst every endeavour has been made to provide accurate information in relation to internal and external finishes, the Company reserves the right to change supplier and alter or vary the design and specification at any time for any reason without prior notice. Consequently these particulars should be treated as general guidance only. Nor do they constitute a contract, part of a contract or a warranty. Travel times and distances are approximate and are sourced from Google Maps, Citymapper, and tfl.gov.uk.

CHK

PENRHYN ROAD, KINGSTON UPON THAMES, KT1 2DN

Enquire for more information:

CHK.LONDON

0333 666 0107



LONDON
SQUARE